



LARRAKEYAH PRIMARY SCHOOL

NEWSLETTER

Larrakeyah Primary School | 3 Packard Street Larrakeyah NT 0820

(08) 89813211 | www.larrakeyahprimary.com.au | E: larrakeyah.admin@education.nt.gov.au

Dates to Remember

Tuesday 29th July

Year 6 Transition Day at DMS

Wednesday 30th July

Basketball Gala Day

Friday 25th July

Darwin Show Day

Friday 1st August

M/U Assembly

Monday 4th August

Picnic Day

Wednesday 13th August

Softball Gala Day

Contents

Page 2	Notes Sent Home
Page 3	Defence School Mentor
Page 4	Visible Learning Valubles at School
Page 5	Information for Parents
Page 6	Canteen Specials
Page 7	Track and Field Info
Page 8	New Morning Bus
Page 9	Route
Page 10	Uniform Policy
Page 11	No Right Turn Bus Travel
Page 12	Y T Author Award
Page 14	Defence Base Entry

FROM THE PRINCIPAL

Dear Parents and Guardians,

A warm welcome to the start of second semester. A special welcome to our new students who have enrolled.

Larrakeyah Primary is an Independent Public School (IPS) – one of the first six selected IPS in the Northern Territory and continues to be recognised for its commitment to high expectations, high standards and high achievement. I trust this semester is happy and successful. The partnership between home and school is always important. If you have any concerns or issues regarding your child, we encourage you to contact the class teacher in the first instance. Myself, Danni Mattiazzo (Assistant Principal, Early Childhood), Brad King (Assistant Principal, Middle/Upper Primary), Ashleigh Church (Senior Teacher Early Childhood) and Riley France (Senior Teacher, Middle/Upper

Primary), are also available.

We hope that you have been reading the online community digests that are emailed to parents each fortnight. Our staff are putting in a lot of time to ensure these are informative to parents and provide information on a range of school programs, approaches and policies. We will continue these this semester.

We look forward to a busy semester ahead with our QUEST and ASPIRE programs, the Year 6 study tour to Singapore and the whole school production "Moana".

Regards

Fathma Mauger

Principal



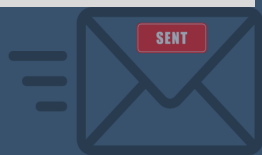
Larrakeyah Primary School is a member of the Darwin City Schools and in partnership with Darwin Middle School, Darwin High School, Northern Territory Open Education Centre, Ludmilla Primary School, Stuart Park Primary School and Parap Primary School.

The community of Larrakeyah Primary School acknowledges and pays respect to the Traditional Custodians of the land on which it is based, the Larrakia People, and pays respect to the Elders—past present and emerging

Recent Notes Sent Home

Audiri

- **T/1, TM, TMos - 100 Days Note**
- **Moana Ticket Information**
- **1 C and 1 G- Aspire Museum and Art Gallery NT**
- **Yr 5 and 6 Darwin Region Inter-School Basketball Gala**
- **ECA Spaces Available**
- **Absentee E form on Website**
- **Year 6 - DMS Excursion Note**



ABSENCES

To ensure we keep our Attendance Records correct please contact our Front Office if your child/children are absent. You can contact us on 89813211.

Alternatively, you can notify us via our website or use the Audiri App. Tap on School logo then use EFORMS

School Hours

Active supervision of Primary Students is from 8am - 8:15am, and then 2:45pm - 3pm.

Preschool is from 8am to 2pm, whereby students are signed into preschool.

Office Hours
8:00am - 3:30pm

Please do not drop or send your child to school before 7:50am as we are not able to provide supervision. As always, the safety of your child is our priority.

Please contact one of our Assistant Principals should you need to discuss this.



Larrakeyah Primary School uses the Audiri App to keep families up to date

Available from Apple App Store or Google Play



[Back to Contents](#)

Defence School Mentor

hello!

Welcome back everyone! Hope you have enjoyed the school break whether you enjoyed the dry season close to home or travelled elsewhere and are rested and ready for a busy term 3.

Dry season tempo has picked up. Talisman Sabre has begun. We have all heard the roar of the F35's overhead and see the Ospreys on the horizon. Many ADF parents are away or super busy currently. If you have family going away on exercise or training, please make myself or your teacher aware so we can support your child during this time with any changes to their emotions and behaviours that might occur.

Teddy Bear Picnic This term we will be having a Defence Kids Club Teddy Bear Picnic acknowledging that sometimes our parents aren't here to tuck us in at night, so we cuddle our ADF bears (that can be requested via Absent Partner Support with the Defence Family Helpline) or someone special instead. Delicious biscuit fun for our Defence Kids will be in week 4, **Thursday 7 August**. All participating students will require parental permission, emails to go out shortly with details.

Some families are getting notice of posting orders out of Darwin. Please let me know of your relocation once known. There are a few student activities to try and make the lead up to the move as positive as it can be. For some students knowing they are leaving can impact their outlook and attitude to school, it may also affect current friendships. Please let me know so we can engage in the process of farewell with activities and mementos. See DFMS advice on [Moving with children | ADF Members & Families | Defence](#) and [Changing schools | ADF Members & Families | Defence](#) and consider [Raising Children Network](#) for solid parenting advice on all stages and ages of children.

Jodie Murdoch DSM jodie.murdoch@education.nt.gov.au 89813211

Defence Family Helpline 1800 624 608

[Back to Contents](#)



Visible Learning in the Classroom

Writing Focus

[2/3 Bromell](#)

Math Focus

[Transition Motter](#)

Click on the links above to visit our website to read the latest articles or to access previous articles

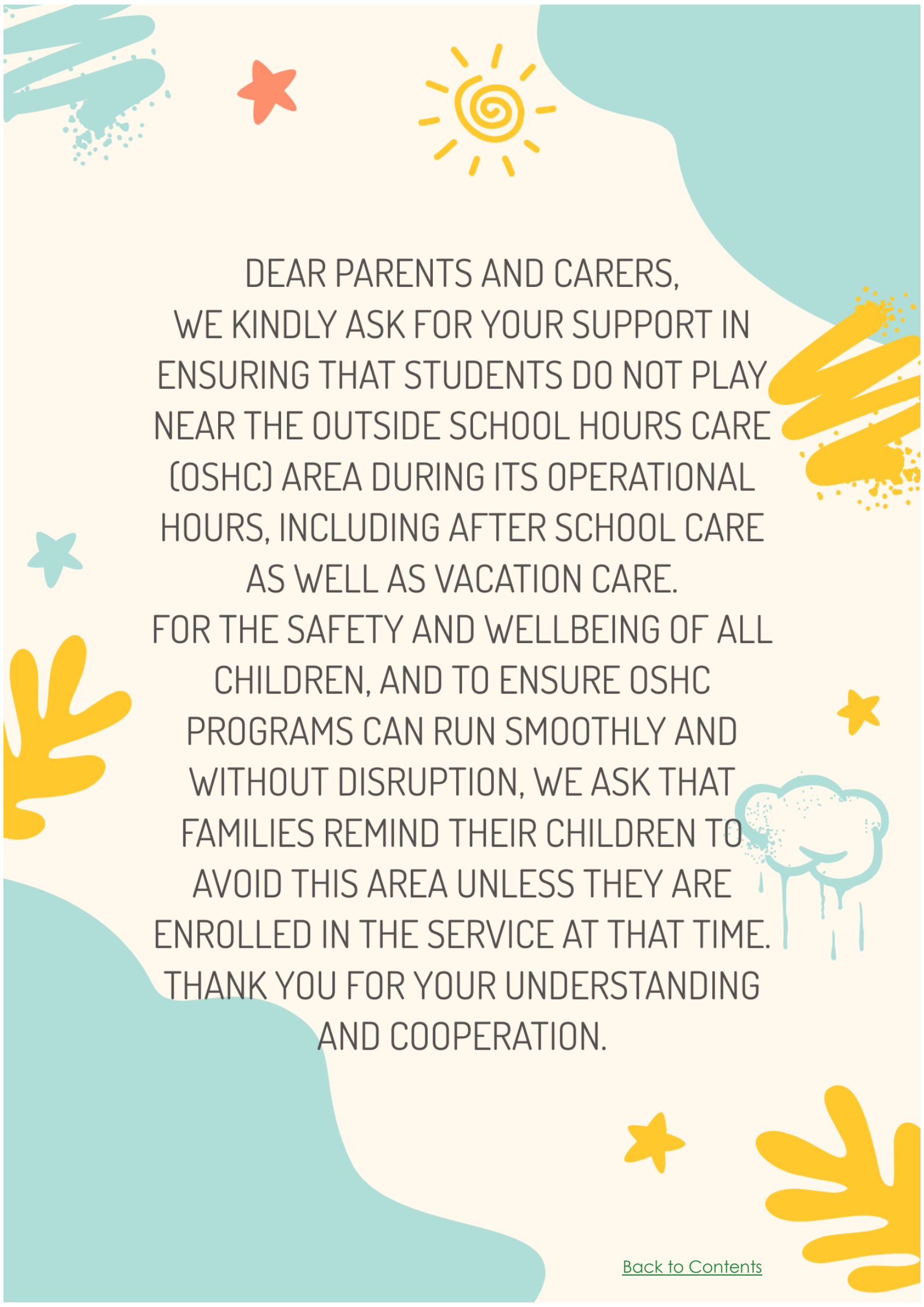


Items and Valuables at School



Please note that it is advised that students **are not** sent to school with toys or valuable items, including smart watches, as they can become lost and/or damaged.

Students will have full responsibility of the items or valuables and the school accepts no responsibility in the event an item or valuable is lost or



DEAR PARENTS AND CARERS,
WE KINDLY ASK FOR YOUR SUPPORT IN
ENSURING THAT STUDENTS DO NOT PLAY
NEAR THE OUTSIDE SCHOOL HOURS CARE
(OSHC) AREA DURING ITS OPERATIONAL
HOURS, INCLUDING AFTER SCHOOL CARE
AS WELL AS VACATION CARE.

FOR THE SAFETY AND WELLBEING OF ALL
CHILDREN, AND TO ENSURE OSHC
PROGRAMS CAN RUN SMOOTHLY AND
WITHOUT DISRUPTION, WE ASK THAT
FAMILIES REMIND THEIR CHILDREN TO
AVOID THIS AREA UNLESS THEY ARE
ENROLLED IN THE SERVICE AT THAT TIME.
THANK YOU FOR YOUR UNDERSTANDING
AND COOPERATION.

CANTEEN SPECIALS

Term 3

Week 1 Wed 16th July
Fish and chips with juice

\$8



\$8

Week 2 Wed 23rd July
Chicken or Ham Pizza with Garlic Bread

Week 3 Wed 30th July
Butter Chicken with Steam Rice and Juice

\$8



\$8

Week 4 Wed 6th August
Chicken Rice with Juice

Week 5 Wed 13th August
Chicken Gravy Roll with
Juice

\$8





DARWIN REGION ²⁰²⁵ SPORT EDUCATION

TRACK & FIELD TEAM

Students aged between 10 and 19 in the year of competition, born from 1/1/2015 - 31/12/2006 can nominate to be a member of the Darwin Region T & F team in 2025.

To be eligible for selection students must be the correct age, meet benchmarks and be enrolled in a Darwin Region School.

Multi-class students can be selected for this team also.

darwinSPORT.doe@education.nt.gov.au
0460 037 976



**SELF
NOMINATE**

NOMINATIONS MUST BE RECEIVED NO LATER THAN
COB 18 JULY 2025

**CONTACT DARWIN REGION SPORT EDUCATION OFFICE
OR YOUR SCHOOL TO RECEIVE A NOMINATION FORM**

SCHOOL BUS TRAVELLING ALERT



School Bus Routes 105 and 130 Parap Primary School / Haileybury Rendall School / The Essington School Monday 14 July 2025

What routes are changing?

- Route 105 will extend to Bayview Boulevard;
 - Route 130 (morning service) will change timetable and route of travel;
 - The above changes will take effect on Monday 14 July 2025.
-

What changes are happening?

The route 105 will extend onto Bayview Boulevard in the morning and afternoon. The route extension will not affect the current timetable.

The route 130 (morning service) will change to depart 10 minutes early at 7:05am and arrive at the Essington School at 8:00am. The bus will no longer service Ludmilla and will travel along Bagot Road to the school.

Larrakeyah Primary School: Students travelling on the 130's bus should catch the 105 - please refer to the attached maps for details.

Please see the route 105 and 130's current and proposed maps on this flyer.

Why are we changing?

To improve the services and ensure students arrive at the schools on time to begin their classes.

If you have any concerns around this consultation or require more information, please contact Public Transport on 8924 7297 or email: public.transport@nt.gov.au before Friday 6 June 2025.

Based on the consultation result, a public notice will be sent to advise the schools and students before the services are implemented on 14 July 2025.

130

The Essington School Bus Service

AM Service

Bayview - Darwin Interchange - Larrakeyah - Cullen Bay - Parap - The Essington School

PM Service

The Essington School - Parap - St John's College - Cullen Bay - Darwin Interchange - Bayview

i Students, Parents and Carers please ensure you have read and understand the Code of Conduct rules of behaviour. All Public Transport buses are equipped with closed circuit television systems (CCTV) to assist with anti social behaviour on buses.



For more information about services and the Code of Conduct please contact Public Transport on 8924 7666 or visit

www.nt.gov.au/publictransport

School bus services operate in school terms only. Departure and arrival times are subject to traffic and weather conditions. Please ensure you arrive at the bus stop a few minutes early.

Legend

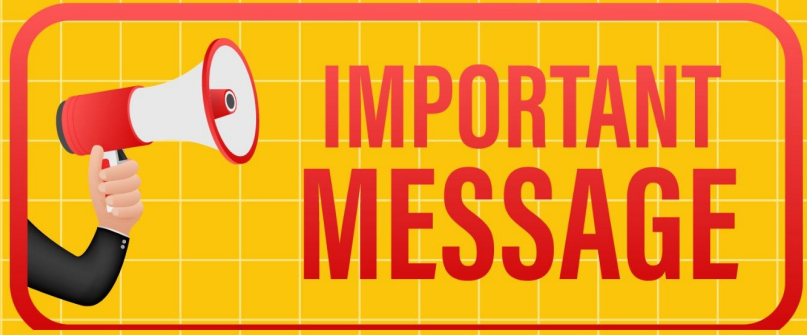
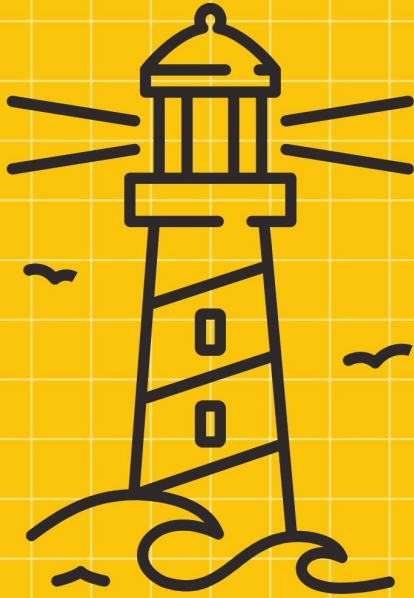
- AM Bus Route
- PM Bus Route
- Bus Stop
- 130 Route Number
- Ⓢ School

North



Proposed route of travel





Uniform Policy



Larrakeyah Primary School are enforcing the uniform policy in 2025
 Students must wear the below items only.
 All items can be purchased through the front office administration area.



School Shirt



School Dress



School Shorts



School Skorts



House Sports Shirt

Worn only on days students have PE Lessons or when otherwise advised. These must be worn with school shorts or skorts.

Leggings or bike pants must be worn underneath school dresses, shorts or skorts and be the colours **navy** or **black**. They are not a replacement of the school shorts or skorts.

If you have any further questions regarding the school uniform policy please contact:

Danni Mattiazzo
 (Early Childhood Assistant Principal)
danni.mattiazzo@education.nt.gov.au

or
 Bradley King
 (Middle/Upper Primary Assistant Principal)
bradley.king@education.nt.gov.au

REMINDER TO PARENTS – NO RIGHT HAND TURN INTO THE SCHOOL

The City of Darwin have erected a sign prohibiting a 'Right Hand Turn' from Packard Street into the main school 'Kiss and Go' carpark. Please be advised parents need to abide by the road regulations.



SCHOOL BUS TRAVEL

Please take note of the bus routes in the links below and speak to your child about the best bus for them to catch. Bus 103 can become quite congested in the afternoon with some students unable to get on due to numbers. Bus 209 is an alternative option for some of our students, especially those who live in Bayview.

Be sure to check the links for details regarding your bus services and policies, including the Code of Conduct for school bus travel (referred to as the Code). It is crucial for parents to become familiar with the Code and ensure that their children understand the policy before allowing them to ride the school bus

[Larrakeyah Primary School - Bus Routes](#)

[Darwin High School/Darwin Middle School](#)

[Rules for catching a School Bus](#)

[Back to Contents](#)

YOUNG TERRITORY AUTHOR AWARDS



Write and create a book and you could be the 2025 Young Territory Author of the Year!

The competition is open to all Territorians 18 years and under
residing in the Territory at the time of entering a submission.

First prize - \$500

Variety NT Runner-up Award - \$250

School Entry prize - \$500

CBCA NT Wow Award - \$200

Enter online, by mail, at any City of Darwin

Library or your local library.

To find out more, go to: darwin.nt.gov.au/ytaa
or scan the QR code.



SCAN ME



Thank you to our sponsors



[Back to Contents](#)

LARRAKEYAH DEFENCE PRECINCT BASE ENTRY

Larrakeyah
Primary
School Drop
Off / Pick Up

MIND THE RULES, FOLLOW SIGNS AND SIGNALS.

To alleviate the heavy traffic congestion during school drop off and pick up times, we request that all parents adhere to the following guidelines. A diagram has been provided for your convenience.

These guidelines are of utmost importance to ensure the smooth operation of the Larrakeyah Defence Precinct and allow unobstructed access for our ADF members and emergency services. Importantly, compliance is crucial to maximise safety.

DROP OFF / PICK UP ZONE (GREEN)

The paved road indicates the boundary of Commonwealth Property. Defence has generously provided access to parking bays for parents to easily drop off and collect their children from school.

EXISTING KISS AND GO ZONE (FRONT OF LPS)

Access to this area is via Larrakeyah Terrace, as indicated by signage. Please note that there is NO RIGHT TURN into the school from Packard Street.



BASE ROUNDABOUT

Parking or standing on the roundabout is strictly prohibited, and the roundabout is not to be used as a U-turn point.

Thank you for your continued support and understanding.

Larrakeyah Base Management